

Product Guide

SoftZone® Climb & Crawl Play Set ELR-12683

IMPORTANT INFORMATION

Read all instructions before beginning assembly. Keep instructions for future use.

SUGGESTED USE

- Designed for preschool age children.
- Encourages climbing, crawling, social interaction and develops gross motor skills.
- Five piece set includes a slide, cylinder, hemisphere and rectangular prism that configure in multiple ways for children to explore.

⚠ WARNING

- ▲ Adult supervision required.
- ▲ Indoor use only.
- ▲ Shoes should not be worn on SoftZone® items.

Maintenance

Check for worn pieces or seams periodically. Remove the product from service when any condition develops that might deem operation unsafe.

Construction

Soft and sturdy foam upholstered with reinforced phthalate-free soft leather. Special non-slip material makes it easier to find the 'floor side' and helps reduce slipping and sliding.

Care and Cleaning

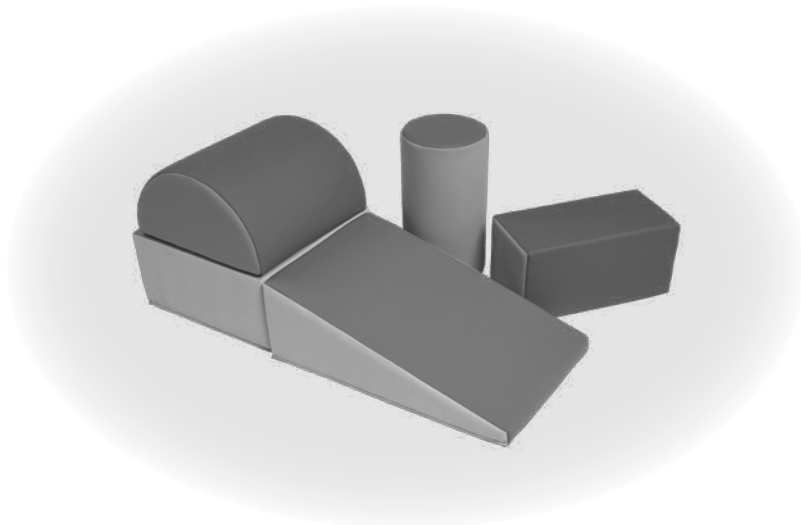
Clean surface with a soft cloth and warm water/mild liquid soap solution. To disinfect use up to a 10:1 water/household bleach solution.

When cleaning or disinfecting, be sure to thoroughly rinse with a clean wet cloth to remove any/all residual chemicals, dry with a soft cloth.

Registration & Warranty

Get the most out of ECR4Kids products by registering at www.ecr4kids.com/registration.

1-Year Limited Warranty.



Customer Service



ECR4Kids, L.P.
2245 San Diego Avenue, Suite 125
San Diego, CA 92110
United States



619-323-2005
option 1 for customer service



Customer Service
ecrcs@ecr4kids.com
Sales & Marketing
sales@ecr4kids.com
General Inquiries
info@ecr4kids.com

**ECR
4 KIDS**
www.ecr4kids.com